

| WAREHOUSE FOR LEASE |

101 25TH ST. S, IRONDALE ALABAMA

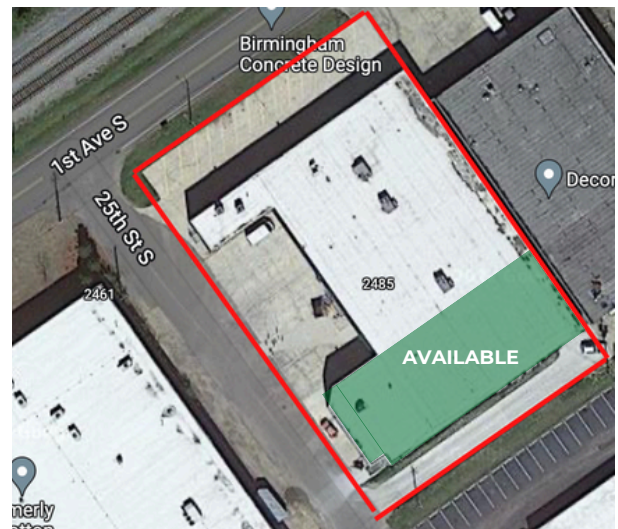


This building was completely renovated in 2019 with all new roof, HVAC, plumbing, electrical, and high-end office finishes. Building is very well located, about 15 minutes east of downtown Birmingham, and has excellent access to I-20 and I-459.

AVAILABLE SPACE **LEASE RATE**
7,400 SF \$8.50 SF NNN

BUILDING FEATURES

- Building consists of 6,800 SF warehouse and 600 SF office
- 18' clear ceilings
- Building is fully sprinklered
- 1 Grade-level door
- 3 phase, 480 volt power
- Completely renovated in 2019
- Long-term leasing options available

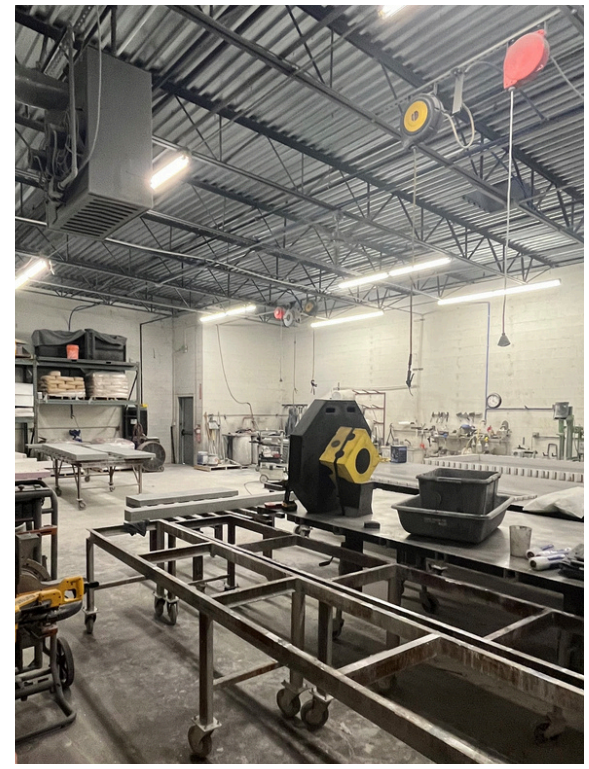


Rich Vanchina, SIOR
205.492.3137
rich@tessa-cre.com

TESSA
COMMERCIAL REAL ESTATE

| WAREHOUSE FOR LEASE |

101 25TH ST. S, IRONDALE ALABAMA

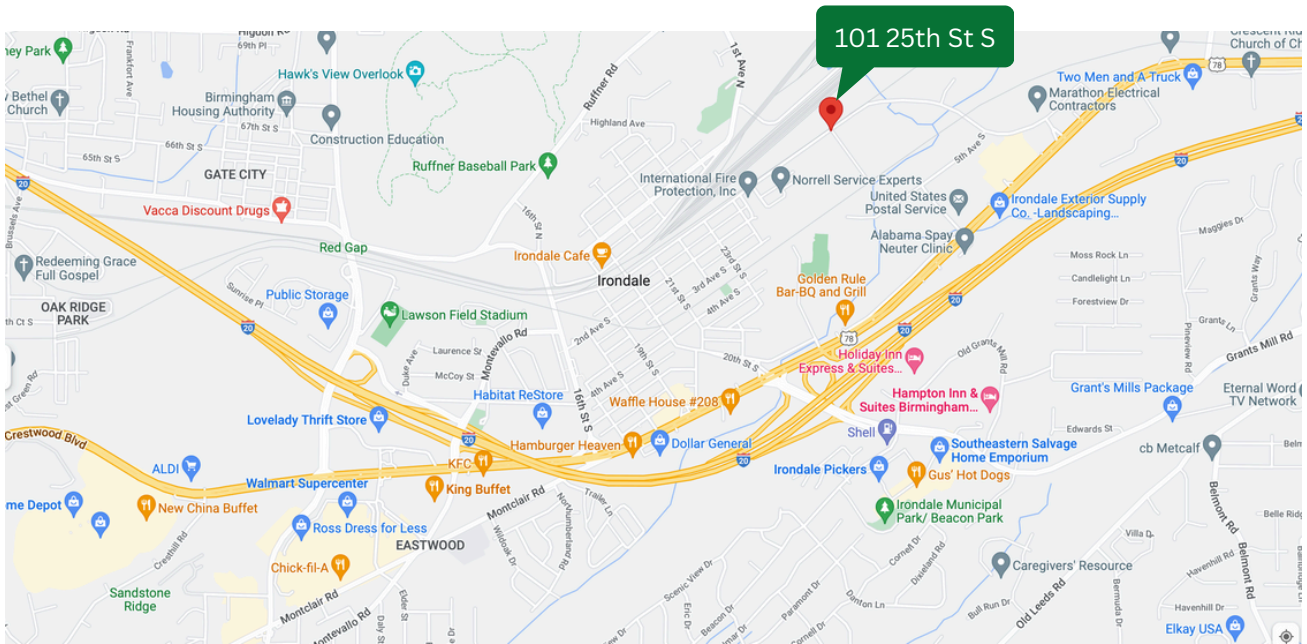


Rich Vanchina, SIOR
205.492.3137
rich@tessa-cre.com

TESSA
COMMERCIAL REAL ESTATE

| WAREHOUSE FOR LEASE |

101 25TH ST. S, IRONDALE ALABAMA



Rich Vanchina, SIOR
205.492.3137
rich@tessa-cre.com

TESSA
COMMERCIAL REAL ESTATE